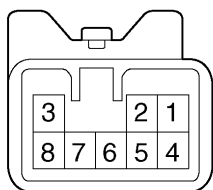


w/ Sliding Roof

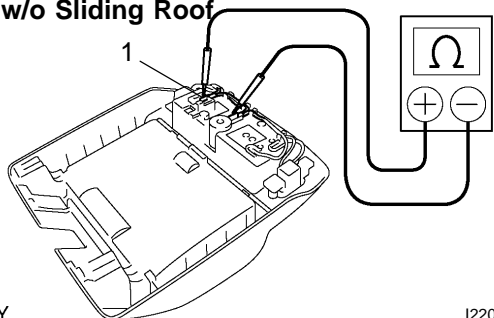
Y

I22012

INSPECTION**1. w/ Sliding Roof:****INSPECT PERSONAL LIGHT SWITCH CONTINUITY**

Tester connection	Switch position	Specified condition
1 - 3	OFF	No continuity
	ON	Continuity

If the continuity is not as specified, replace the light assembly or bulb.

w/o Sliding Roof

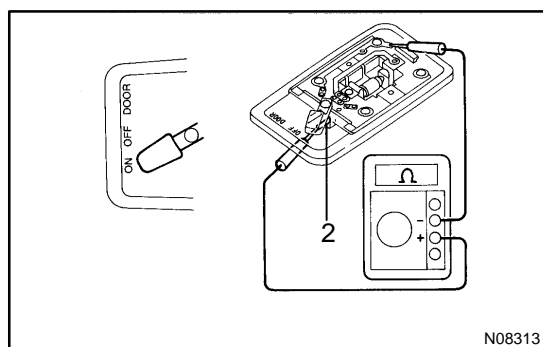
Y

I22010

2. w/o Sliding Roof:**INSPECT PERSONAL LIGHT SWITCH CONTINUITY**

Tester connection	Switch position	Specified condition
1 - Ground	OFF	No continuity
	ON	Continuity

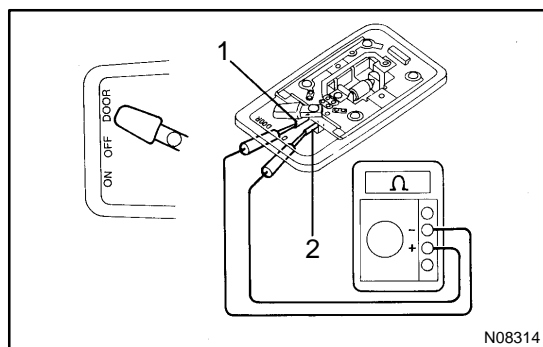
If the continuity is not as specified, replace the light assembly or bulb.



N08313

3. INSPECT FRONT INTERIOR LIGHT SWITCH

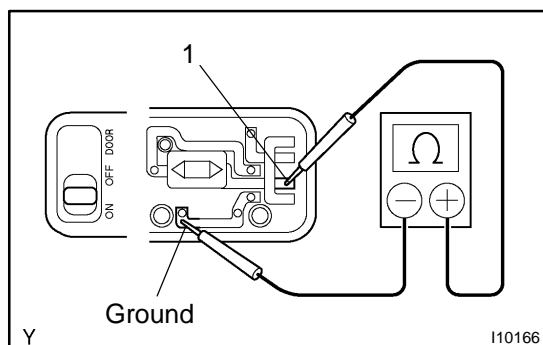
- Disconnect the connector from the interior light assembly.
- Turn the interior light to switch ON, then check that continuity exists between terminal 2 and the body ground.



N08314

- Turn the interior light switch to DOOR, then check that continuity exists between terminal 1 and 2.

If the operation is not as specified, replace the switch.

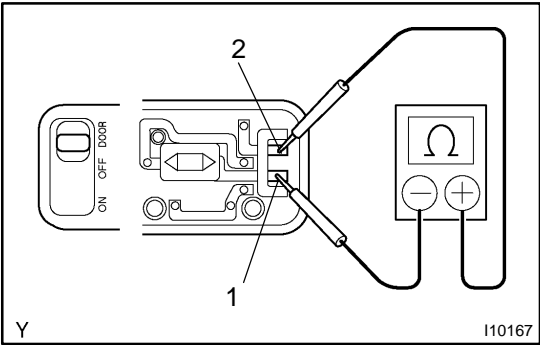


Y

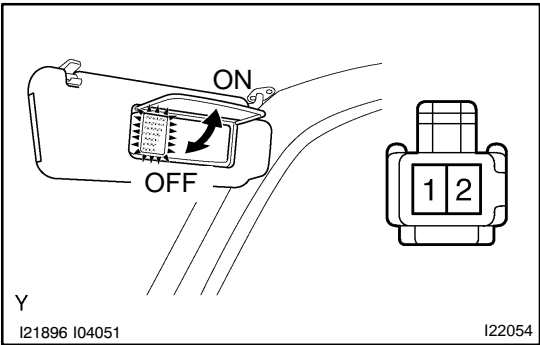
I10166

4. INSPECT REAR INTERIOR LIGHT SWITCH

- Disconnect the connector from the interior light assembly.
- Turn the interior light switch to ON, then check that continuity exists between terminal 1 and the body ground.



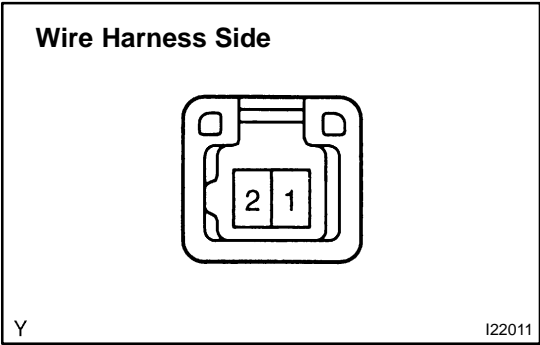
- (c) Turn the interior light switch to DOOR, then check that continuity exists between terminals 1 and 2.
If the operation is not as specified, replace the switch.



5. INSPECT VANITY LIGHT CONTINUITY

Tester connection	Switch position	Specified condition
1 - 2	OFF (Closed)	No continuity
	ON (Opened)	Continuity

If the continuity is not as specified, replace the vanity light assembly or bulb.

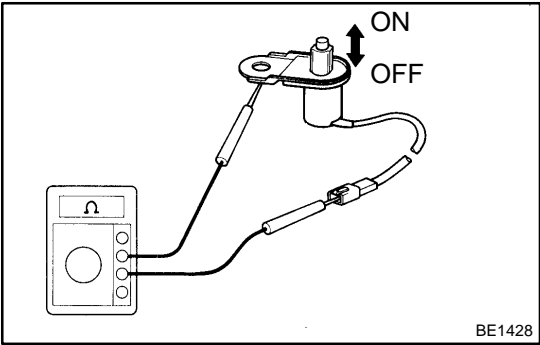


6. INSPECT VANITY LIGHT CIRCUIT

Disconnect the connector from the light and inspect the connector on the wire harness side, as shown.

Tester connection	Switch position	Specified condition
1 - Ground	Constant	Continuity
2 - Ground	Constant	Battery Positive Voltage

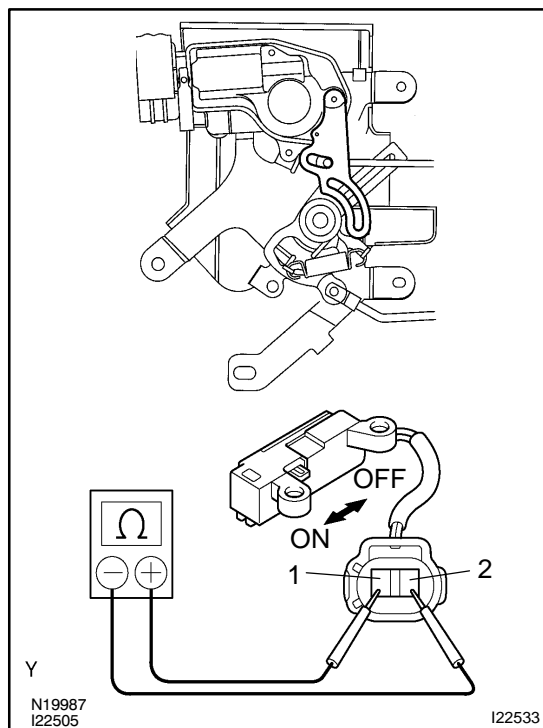
If the circuit is not as specified, inspect the power source or wire harness.



7. INSPECT DOOR COURTESY SWITCH CONTINUITY

- (a) Check that continuity exists between terminals and the switch body with the switch ON (switch pin released: opened door).
(b) Check that no continuity exists between terminals and the switch body with the switch OFF (switch pin pushed in: closed door).

If the operation is not as specified, replace the switch.



8. INSPECT BACK DOOR COURTESY SWITCH CONTINUITY

- (a) Check that continuity exists between terminal 1 and 2 with the switch ON (switch pin pushed in).
- (b) Check that no continuity exists between terminal 1 and 2 with the switch OFF (switch pin pushed in).

If the continuity is not as specified, replace the switch.